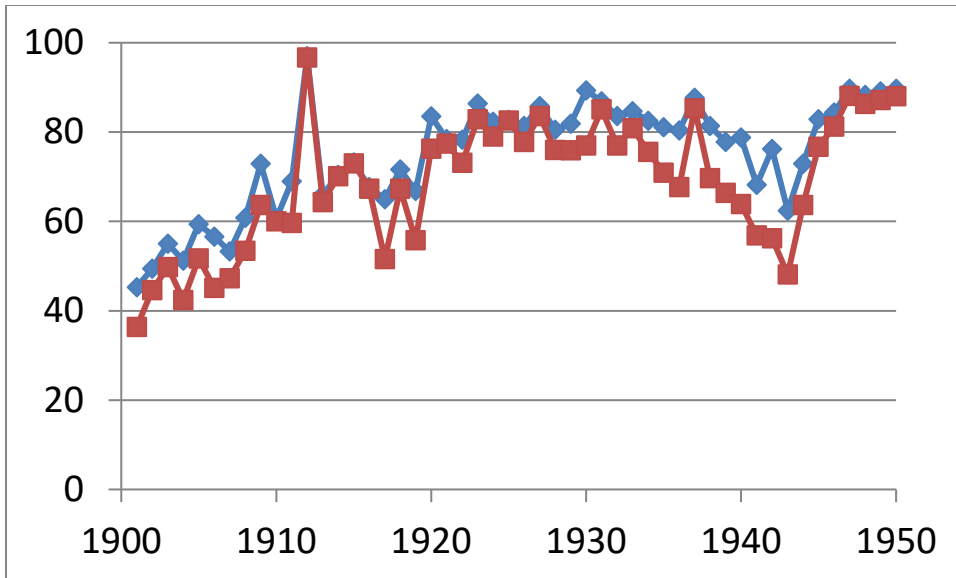


President's Report  
Retrosheet meeting  
June 24, 2017

- Proofing of 1928 event files which will be in the upcoming release.
- Proofing of "recent" seasons: 1973-1981.
- Inputting: Dick Cramer, Jim Herdman, Cliff Blau, David Vincent, Doug Burks, Gary Frownfelter, and Howard Johnson.
- Editing: David Vincent edited for syntax and content for the event files for several seasons in the 1920s and 1930s, making the subsequent proofing much easier.
- Schedule enhancements: David Vincent processed the schedules for all years to identify games which were not played as planned. For almost all rescheduled games he found the reason and the rescheduled dates. These enhanced files are now on our website and I am proud that we are the only location for such complete information of this type.
- Deducing: Tom Thress, Dick Cramer, Jim Wohlenhaus, Jim Herdman, John Gabcik, Mark Pankin and Stew Thornley. 1943 and 1942 have been completed and will in our upcoming release.
- The deductions require newspaper accounts and we have had huge help in downloads from newspapers.com by Jim Herdman, Tom Thress, Dick Cramer, Wayne Townsend and Jim Wohlenhaus.
- Tom Ruane has continued constructing box score files and these are now complete back to 1910. He has had help from Dave Lamoureux and Jonathan Frankel in checking out RBI data among other things.
- Game account acquisitions: Joe Stillwell still prowls eBay and auction websites, getting us anywhere from three to ten games per week. Luke Kraemer has continued to collect scorebooks and I recently went to Hunt Auctions to photograph some 250 games from the 1920s, almost all Philadelphia.
- Summary graph of our current holdings and input games appear below for both this year and last.

Percentage of game accounts on hand and entered, 1901-1950 (62,343 played and 46,194 on hand or 75%). 69% have been entered. Data as of 06-08-2016



Percentage of game accounts on hand and entered, 1901-1942 (52435 played, 39182 on hand, 36522 entered). Data as of 06-24-2017.

